

the
GREGG
MUSEUM
of ART & DESIGN

IMPACT REPORT

2025

A MESSAGE FROM THE DIRECTOR

JANUARY 1, 2026

WHAT A TRANSFORMATIVE 18 MONTHS IT HAS BEEN!

Joining the Gregg Museum of Art & Design during this period of profound reimagination, alongside the installation of Chancellor Kevin Howell, has been a tremendous honor.

In the last year, the Gregg has welcomed more than **16,000 visitors**, engaged **5,000+ people** through art activations and outreach across campus, and served as a teaching space for over **60 NC State classes**. From neuroscience to design, the museum is becoming an interdisciplinary hub of learning—John Meitzen’s neuroscience lab class of 70 students, for instance, has become one of our most frequent classroom collaborators.

These 18 months as the museum’s new director have been instrumental in discovering the untapped potential and deep community interest across NC State and Downtown Raleigh. Together, we have created new pathways for success, collaboration and meaningful relationships. **Your Brain on Art** brought faculty research to life. **Art2Wear: Revive** drew more than 600 participants to a vibrant student-led celebration of creativity. **Carl Joe Williams’s Amazing Grace residency** opened space for dialogue and reflection.

These initiatives are transforming the Gregg Museum into **NC State’s premier art museum—a catalyst for creativity and collaboration** across campus and throughout the region. As we look ahead, we are ready to take this momentum to the next level: welcoming visitors more deeply into NC State’s creativity, amplifying student leadership and elevating the university’s reach, reputation and community connection.

With the completion of our strategic planning process, we are poised to launch the **2025–2030 Transformation Plan**, which will include developing a **Museum Studies Certificate program**, **expanding gathering spaces** and **co-creating interdisciplinary exhibitions** such as *In Search of Thoreau’s Flowers* and the student-driven exhibition **WORDS = POWER**.

We invite you to continue supporting the Gregg Museum as we shape a museum that is vibrant, inclusive and forward-looking, a place where creativity connects us all.



— SARA SEGERLIN, MUSEUM DIRECTOR

2025 VISITATION & SOCIAL MEDIA ENGAGEMENT

16,000 Total Audience Reach

5,000+ People Engaged at
On-Campus
Activations

3 Music Concerts at
the Lawn

3 Festivals with
Rooted, Family Fun
Fest and
Environmental
Justice Symposium
Mini Market

Visitors from **51 NC counties, 38
U.S. states** and **16 Countries**

Countless meetings to build
relationships with NC State's
campus community and local
organizations



Shirlette Ammons Concert on the Gregg
Museum Front Lawn



Jeghetto Performance at Family Fun Day on
the Gregg Museum Front Lawn



Environmental Justice Symposium Mini
Market on the Gregg Museum Front Lawn

A CATALYST FOR COLLABORATION

The Gregg Museum's refreshed mission positions the museum as a **catalyst for collaboration**—an interdisciplinary gathering space where art meets science, the humanities, wellness and student creativity.

In 2025, this vision came to life through exhibitions, residencies and partnerships that brought together faculty, students, artists and community collaborators across campus and beyond. The collaborations and partnerships—below—reflect how this work has taken shape and continues to grow.

Highlights from spring 2025 included ***Your Brain on Art: Reimagining the Gregg Museum Collection***, an interdisciplinary exhibition blending neuroscience, design and humanities research; ***Meditation with Sun Boxes*** by Craig Colorusso, which offered meditative sound experiences that supported campus wellness; and ***Amazing Grace*** by Carl Joe Williams, an artist residency centered on student voices and creative exchange. The Gregg Museum also expanded partnerships with Hillsborough Street Community Service Corporation and campus collaborators. In addition, Museum Director Sara Segerlin joined NC State's Public Art Committee as chair, positioning the Gregg to play a more active role in advancing innovation and shared stewardship of public art across campus.

Fall 2025 exhibitions further demonstrated this interdisciplinary approach, connecting art, science, poetry and storytelling through immersive and participatory experiences. ***In Search of Thoreau's Flowers*** was an immersive installation developed by a creative team of NC State faculty and alumni, paired with an artist residency by Leah Sobsey and presented in collaboration with the Office of University Interdisciplinary Programs and the N.C. Plant Sciences Initiative, including a new installation at the PSI building. ***House of Ideas: Plants in Art*** functioned as a participatory learning lab for botanical sketching and collection-based exploration. ***'the halls of a changing sea'*** by Claire Alexandre was a solo exhibition exploring portraiture, ancestry and ecology. ***WORDS = POWER*** was a student-driven exhibition blending visual art, poetry and performance, created in collaboration with NC Poet Laureate Jaki Shelton Green, the Crafts Center, the African American Cultural Center and College of Humanities and Social Sciences Master of Fine Arts Creative Writing students. We also hosted a temporary art installation by renowned artist Janet Echelman, along with a panel discussion featuring her collaborators, choreographer Rebecca Lazier and NC State Mathematics Assistant Professor Andrew Sageman-Furnas, as part of **NC State Live's InterweaveFest**.

Detail of The Harrania Workshop, *Pigeon Towns in the Field*, 1970-1978, Gregg Museum collection, Transfer from the North Carolina Museum of Art 1991.004.261

Your Brain on Art: Reimagining the Gregg Museum Collection

Gregg Museum Collection | March 20 - September 27, 2025

An interdisciplinary exhibition blending art, neuroscience and wellness to reveal how creative experiences shape the human brain.



Throughout the spring of 2025, the Gregg Museum explored art as a catalyst for reflection, connection and transformation by examining racial and societal constructs, identity, neuroscience, spoken word and the storytelling power of textiles and fashion. Together, these exhibitions highlighted the intersection of creativity, community and legacy, inviting audiences to experience art as both deeply personal and profoundly collective.

Meditation with Sun Boxes, A Traveling Exhibition

Craig Colorusso | April 4 - April 28, 2025

A traveling sound installation transforming campus spaces into meditative environments through immersive, ambient sound.



'Of Pleasure, Of Curiosity, Of Intelligence'

Danielle Hatch | April 5 - June 1, 2025

An outdoor textile installation examining identity, femininity and NC State's textile legacy at the intersection of campus and community.



SPRING EXHIBITIONS

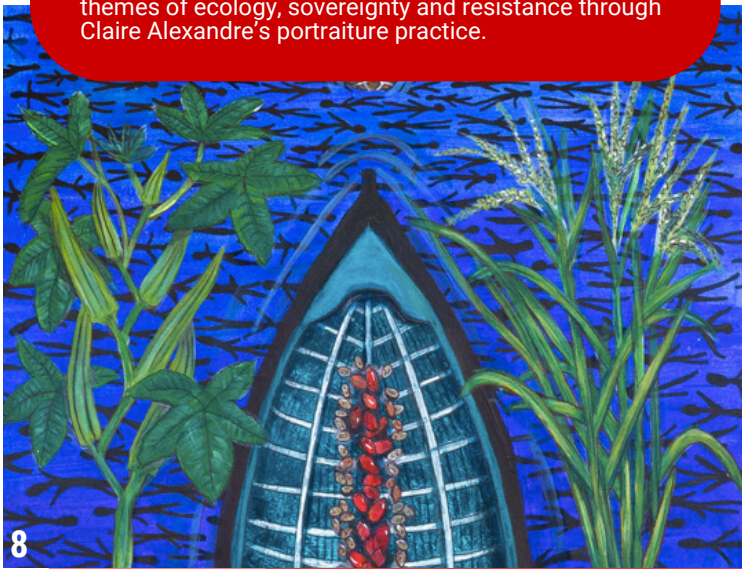
FALL EXHIBITIONS

The fall exhibitions of 2025 elevated the connection of art to NC State's science and humanities community through biodiversity, ecology, language and collective memory. Together, they highlighted environmental stewardship and the enduring power of storytelling and campus partnerships.

'the halls of a changing sea'

Claire Alexandre | August 12, 2025 – February 28, 2026

A powerful solo exhibition exploring ancestral storytelling, plant-based pigments and the intertwined themes of ecology, sovereignty and resistance through Claire Alexandre's portraiture practice.

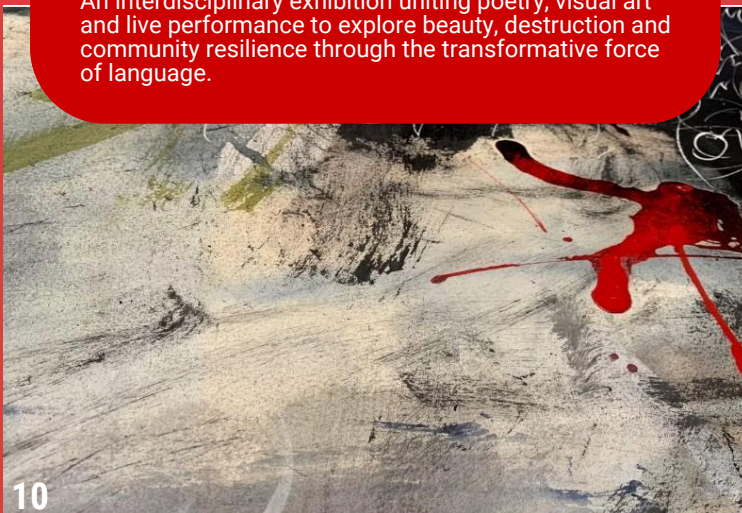


8

WORDS = POWER

Co-Curated by Carol Fountain Nix, Director of NC State's Craft Center | October 30, 2025 – February 28, 2026

An interdisciplinary exhibition uniting poetry, visual art and live performance to explore beauty, destruction and community resilience through the transformative force of language.

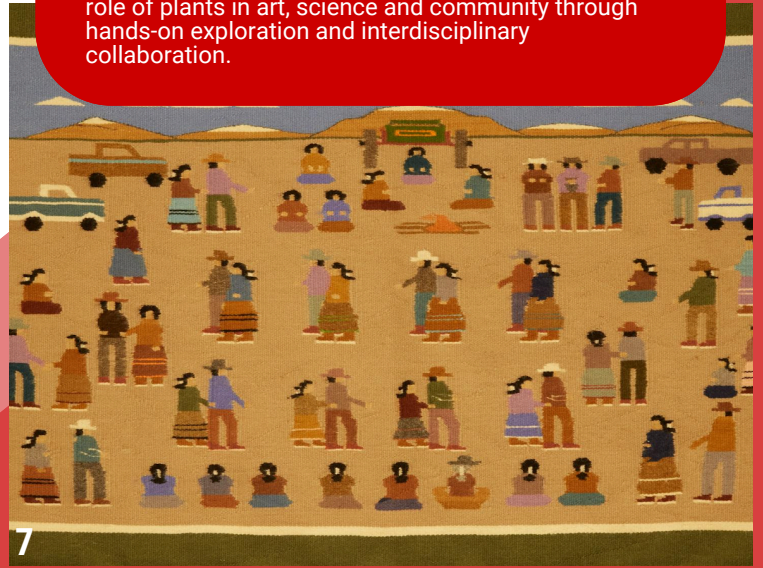


10

The House of Ideas: Plants in Art

Gregg Museum Collection | August 5, 2025 – May 2026

A participatory gallery learning lab examining the vital role of plants in art, science and community through hands-on exploration and interdisciplinary collaboration.

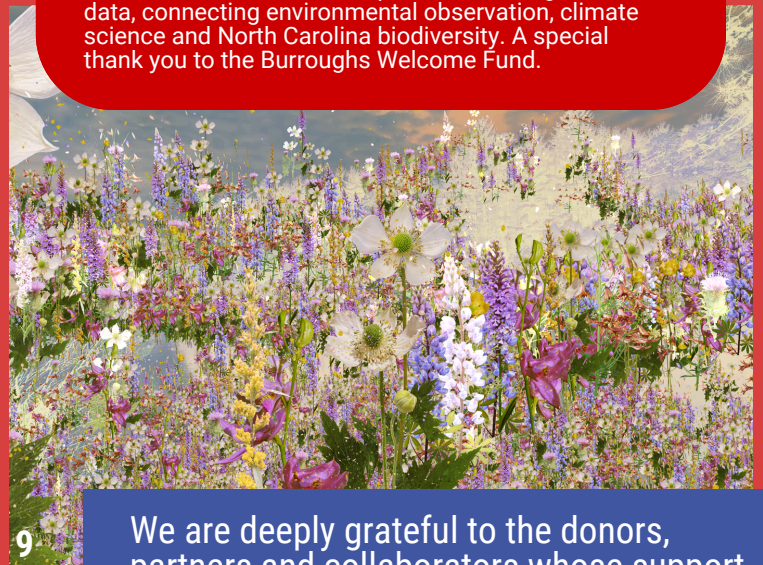


7

In Search of Thoreau's Flowers

Marsha Gordon, Emily Meineke, Robin Vuchnich, and Leah Sobsey | September 10, 2025 – January 31, 2026

An immersive, interactive exhibition reviving Henry David Thoreau's botanical specimens through art and data, connecting environmental observation, climate science and North Carolina biodiversity. A special thank you to the Burroughs Welcome Fund.



9

We are deeply grateful to the donors, partners and collaborators whose support made this impact possible!



16

19

20

8

KEY ARTIST COLLABORATORS



CARL JOE WILLIAMS

ARTIST IN RESIDENCE

Amazing Grace: Confronting the Enduring Legacy

Carl Joe Williams is a multidisciplinary artist who transforms everyday objects into vibrant works exploring history, community, and social change. A founding member of Blights Out in New Orleans, he supports community-led urban revitalization. His work has been exhibited nationally, including at Crystal Bridges Museum of American Art and the Museum of Contemporary Art Jacksonville.

DANIELLE HATCH

'Of Pleasure, Of Curiosity, Of Intelligence'

Danielle Hatch is a multidisciplinary artist whose installations, sculpture, and performance explore the female body's relationship to the built environment and structures of power. An Arkansas-based artist and featured participant in the 2025 Venice Biennale U.S. Architecture Pavilion, she has exhibited nationally, including at Crystal Bridges Museum of American Art and the AD&A Museum.

CRAIG COLORUSSO

Meditation with Sun Boxes

Craig Colorusso is a sound and light installation artist whose immersive works invite audiences to slow down and engage more deeply with their surroundings. Creating large-scale, meditative experiences across deserts, cities, and rural landscapes, his installations have toured 32 U.S. states and internationally.

KEY ARTIST COLLABORATORS



LEAH SOBSEY

ARTIST IN RESIDENCE

In Search of Thoreau's Flowers and the N.C. Plant Science Initiative

Leah Sobsey is a multidisciplinary artist and Associate Professor at UNC Greensboro whose photographic practice bridges science and installation. Drawing from NC State's herbaria and insect collections, she created cyanotypes that honored disappearing plant species and early photographic traditions. She was the inaugural Artist in Residence for NC State's Plant Sciences Initiative and the Gregg Museum.

ROBIN VUCHNICH

In Search of Thoreau's Flowers and House of Ideas: Plants in Art

Robin Vuchnich is a new media artist, former adjunct lecturer at NC State's College of Design, and founder of XO Immersive. Her light-based installations merge scientific data and visual storytelling to explore biodiversity loss and ecological change. For this exhibition, she created immersive works informed by herbarium archives and environmental data.

MARSHA GORDON

In Search of Thoreau's Flowers and House of Ideas: Plants in Art

Marsha Gordon is Professor and Director of Film Studies at NC State, as well as a documentary filmmaker and installation artist. Her work engages archives and visual culture. For this exhibition, she collaborated with Robin Vuchnich on artworks incorporating imagery from NC State's herbaria and insect collections.



Fall 2025 Intern Final Presentations



Student Art Sale on the Gregg Museum Front Lawn

EXPLORING STUDENT VOICES AT THE GREGG

We broadened student opportunities with 11 student ambassadors in visitor services, seven new student internships exploring roles in the museum industry involving curation, digital media, exhibition design, business operations and collections care, and a student art sale featuring 57 artists.

3,658 Student Impact Hours and 18 Student Paid Positions

600 Attendees at *Art2Wear: Revive*

500 Attendees at the Arts NC State Student Art Sale at the Gregg Museum

57 Student Artist Vendors

1,067 Students Toured the Gregg Museum's exhibitions and collections with 64 NC State Classes

If you would like to support the Gregg Museum's student opportunities, please consider a gift to the Gregg Museum Enhancement Fund or contact the Museum Director.



Student Art Sale on the Gregg Museum Front Lawn



2025 Collections Intern, Lorelei Weaver preparing Emberá basket, pre-2004 (Gregg Museum collection 2024.006.017) for Arts NC State Case installation

UPLIFTING HIGH-IMPACT STUDENT EXPERIENCES AT NC STATE UNIVERSITY

Art2Wear

The Gregg Museum staff worked closely with the College of Design's Art2Wear student team of more than 50 students to co-create an exhibition celebrating the program's 12-year history, alongside a student-led wearable art and performance event that engaged more than 600 participants. The project had a major impact in raising awareness of the Gregg Museum as a creative gathering space and a trusted collaborator with NC State's student body, while demonstrating the strong potential for future co-created, student-driven exhibitions and programs. Building on this success, the Gregg Museum looks forward to hosting Art2Wear for a second year in Spring 2026.

Student Art Sale

For the first time, the Gregg Museum hosted Arts NC State's Student Art Sale at the museum. The event was a major success, showcasing work by 57 student artists and creating a vibrant marketplace that welcomed more than 500 visitors.

Broadened Internships

Thanks to support from the Windgate Foundation, the Gregg Museum now sustains 18 paid student positions, including 11 students running Visitor Services. We have also expanded internships beyond traditional collections roles to include Digital Media, Exhibitions Development and Reparation, Learning and Engagement and Business Operations.

To support this growth, Riley Holt—who oversees Visitor Services—has reimagined her role to serve as Student and Visitor Experience Lead, providing comprehensive onboarding and training for all student employees, integrating NC State's student experience rubric and guiding staff in mentoring and coaching students through day-to-day work and culminating projects.

In Fall 2025, the Gregg Museum welcomed its largest student internship cohort to date. Looking ahead, the Museum seeks additional funding to expand internships from Fall and Spring semesters to include graduate internships and summer opportunities.

MEET THE TEAM



Gregg Museum Team, 2026

While we continue to seek increased permanent staff and student positions, particularly in curatorial, art management, collections research, and engagement, the Gregg Museum team is intentionally working smarter and mightier with a small staff. **Donor investment plays a critical role in unlocking capacity**, and we are looking for ways to best leverage strategic partnerships, savvy business practices, and the creative talent across NC State to extend our scale, deepen collaboration, and deliver high-impact exhibitions and programs.

ENGAGEMENT TEAM

- **Randi Jeffreys** - Community Relations and Marketing Coordinator
- **Tamara Velasco** - Senior Education Coordinator
- **Riley Holt** - Student & Visitor Experience Lead
- **Dana DiMaio** - Operations Coordinator
- **Sara Segerlin** - Museum Director (Chief Engagement Officer)
- **Four student interns** (art education, digital media marketing, and business operations)

ART MANAGEMENT TEAM

- **Mary Hauser** - Associate Director, Art Management
- **Amanda Reed** - Associate Registrar
- **Christopher Garrison** - Collections Assistant
- **Matthew Gay** - Art Preparator
- **Lee Chavis-Tartaglia** - NAGPRA Collections Assistant
- **Meredith Osborne** - Curatorial Assistant
- **Sara Segerlin** - Museum Director (Chief Curator)
- **Three student interns** (collections care and exhibition installation)

We are excited to welcome several new team members to the Gregg Museum. **Lee Chavis- Tartaglia**, a Public History master's student in NC State's College of Humanities and Social Sciences, is supporting evaluation of the museum's Native American Collection and ongoing Native American Graves Protection & Repatriation Act (NAGPRA) compliance efforts. **Randi Jeffreys** has joined us to advance marketing and community relations, with a focus on engaging NC State students through dynamic social media and expanding our reach across the Triangle and downtown Raleigh. We are also thrilled to welcome **Meredith Osborne** as Curatorial Assistant, an emerging-curator training role supporting two major exhibitions over the next two years.

ART MANAGEMENT HIGHLIGHTS

Native American Graves Protection & Repatriation Act (NAGPRA) Highlights

- 30** 30 Tribes, Nations and Native Hawaiian Organizations contacted
- 8** Objects are in process toward repatriation



Collections Interns Liam McCandless (left) and May Chéron (right), Arts NC State Case Installations, spring 2025, photo by Randi Jeffreys. Liam's exhibit is titled "Diné Craftsmanship: Intersecting Practicality and Art" and May's exhibit is titled "Whimsy in the Natural World."

Collections Team Highlights

- 55** Visits to the collections space hosted
- 310** Visitors, including NC State staff, faculty and students; K-12 groups; community groups; and researchers from other institutions
- 4** Collections Interns



Collections Interns Lorelei Weaver (left) and Julia Hill (right), Arts NC State Case Installations, fall 2025, photo by Rachel Kelly. Lorelei's exhibit is titled "Indigenous Art and the Environment" and Julia's exhibit is titled "Persevering Through Community."

**THIS IS MORE THAN
DOUBLE THE NUMBER OF
VISITS AND TRIPLE THE
NUMBER OF VISITORS TO
COLLECTIONS LAST
YEAR!**

COLLECTIONS UPDATE & CONFERENCE HIGHLIGHTS

In 2025, the Gregg Museum strengthened collections stewardship by hiring a **Collections Assistant focused on the Native American Graves Protection and Repatriation Act (NAGPRA)**, advancing the review of holdings, consultation workflows, and long-term repatriation planning. The collections team also supervised **four student interns**, each gaining hands-on experience curating and installing a collection case in Talley Student Center's Arts NC State office suite, while staff participated in professional development to stay aligned with evolving museum standards.

Museum staff demonstrated national and regional leadership through professional engagement and conference presentations. **Mary Hauser** organized and presented "*What Belongs? How Collection Planning Shapes Strong Museums and Builds Community*" alongside América Salomón, Ashley B. Offill, Hope Saska, Valarie Kinkade, Robyn Thiesbrummel and Miquel Geller at major museum conferences across the country including:

- Association of Academic Museums and Galleries Annual Conference – Albuquerque, New Mexico
- Southeastern Museums Conference – Montgomery, Alabama

Amanda Reed attended the Association of Tribal Archives, Libraries and Museums International Conference (Cherokee, North Carolina), including a pre-conference workshop on Local Contexts, digital tools for protecting Indigenous cultural heritage.

Looking ahead, the Gregg Museum will launch a Collections Development Plan to assess how the collection serves NC State today and guide strategic refinements that support teaching, research and engagement.





BE A PART OF THE GREGG MUSEUM'S 2025-2030 TRANSFORMATION PLAN

Revitalize the Gregg Museum's website and messaging with a renewed mission, vision, and guiding principles.

Launch an undergraduate Museum Studies Certificate to formalize student training, faculty teaching, coursework, and hands-on professional experience.

Activate spaces, including outdoor gathering areas for music, festivals and expanded community-driven events.

Nurture art's impact across campus and help shape a campus-wide Public Art Strategic Plan.

Produce a Collections Development Plan to strengthen access, teaching, and sustainable growth aligned with NC State's research goals.

WE'VE REIMAGINED THE GREGG MUSEUM AND THE BEST IS YET TO COME



SEE FOR YOURSELF ON OUR IMPACT VIDEO!

We extend our deepest thanks to our supporters and Friends of the Gregg. Recent and ongoing support includes:

- **Windgate Foundation** – \$250,000 for 2025–2027
- **Art Bridges Foundation** – \$59,000
- **Burroughs Wellcome Fund** – \$20,000 for Art & Science initiatives
- **Raleigh Fine Arts Society** – \$5,000

YOUR CONTINUED SUPPORT OF THE **GREGG MUSEUM ENHANCEMENT FUND MAKES THIS WORK POSSIBLE.**



**THANK
YOU**



ARTWORK CREDITS

1) Unknown maker, Silver Jubilee adire cloth, ca. 1975, Gregg Museum Collection, Gift of Linda Kornberg 1999.010.006

2) *Amazing Grace: Confronting the Enduring Legacy* featuring artwork by Carl Joe Williams, gallery photo by Christopher Garrison, 2025

3) *Art2Wear: Through the Archives*, featuring *Home*, 2024 by Lily Barber

4) *Your Brain on Art: Reimagining the Gregg Museum Collection*, gallery photo by Christopher Garrison, 2025

5) Craig Colorusso, *Meditation with Sun Boxes*, Poster design by Erin Secosky, 2025

6) *Of Pleasure, Of Curiosity, Of Intelligence* installation by Danielle Hatch, 2025, Photo by Christopher Garrison

7) Laura Nez, *Dance with Observers*, before 1995 1970-1978, Gregg Museum collection, Gift from Drs. Norman and Gilda Greenberg 2009.019.002

8) *Toward a Home not yet built*, 2020 by Claire Alexandre, from the exhibition 'the halls of a changing sea'

9) Robin Vuchnich, *The Memory of a Season*, 2025, immersive art, featured in the exhibition *In Search of Thoreau's Flowers*

10) Carol Nix, *Hell*

11) Janet Echelman, *Study (Butterfly Rest Stop 1/9 Scale)*, 2022, temporary installation in the Gregg Museum lobby during InterweaveFest, October, 2025.

12) Robin Vuchnich, *The Memory of a Season*, 2025, data visualization of plants in decline, featured in the exhibition *In Search of Thoreau's Flowers*

13) The Harrania Workshop, *Pigeon Towns in the Field*, 1970-1978, Gregg Museum collection, Transfer from the North Carolina Museum of Art 1991.004.261

14) Ayomide Bayowa, detail of *Alawo Dudu* trilogy, 2024

15) *Amazing Grace: Confronting the Enduring Legacy* featuring artwork by Carl Joe Williams, gallery photo by Christopher Garrison, 2025

16) *Mighty River*, 2025 by Carol Fountain Nix featured in *WORDS = POWER*, gallery photo by Christopher Garrison

17) Claire Alexandre, *Desert Child*, 2021

18) "Couple (Fragmented)" print and stamps by Elsa Hoffman, 2022, featured in *Your Brain on Art: Reimagining the Gregg Museum Collection*, gallery photo by Christopher Garrison

19) Example of *Meditation with Sun Boxes*, photo courtesy by Craig Colorusso

20) Leah Sobsey, *The Fall of the Leaf, Wavy Leaf Aster*, 2022, cyanotype on glass with 23K gold

21) Museum visit, Alabama Department of Archives and History, Oct 21, 2025, photo courtesy of Mary Hauser